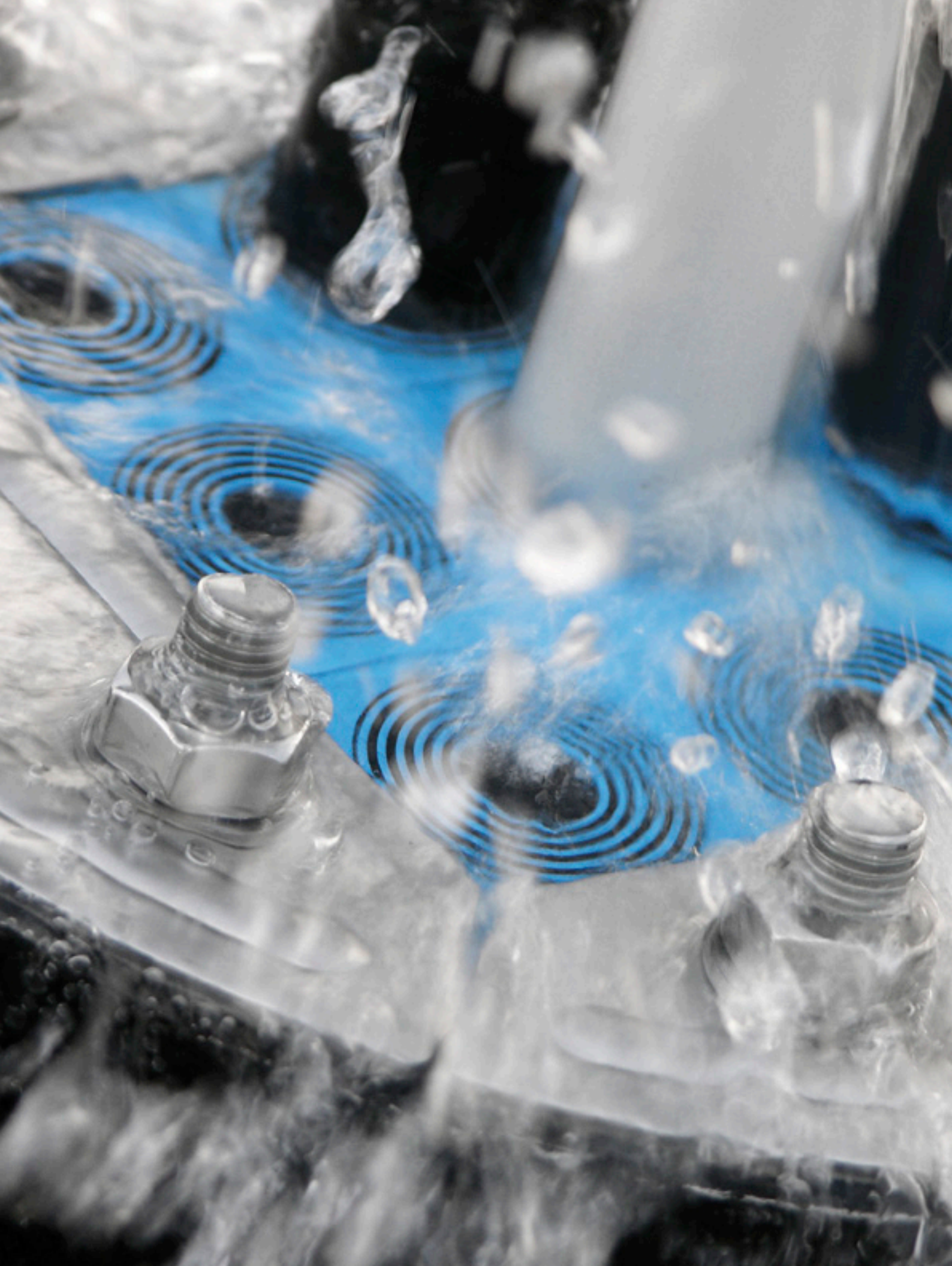




# **Cable and pipe seals**

FOR BUILDINGS/CONSTRUCTIONS

**We Seal Your World™**





# When safety matters

Roxtec is the market leader in the modular-based sealing industry. Our solutions for cables and pipes help to add safety and reliability to all manner of construction throughout the world.



## Quality solutions

The Roxtec sealing system protects openings for cables and pipes from a variety of hazards. These include fire, gas and water. The system is also compatible for use in ATEX/Ex and EMC applications.

The quality of the system also provides features, such as outstanding reliability and superb user flexibility over time. Thanks to this combination our customers achieve safe solutions as well as long-term cost-

efficiency in maintenance. Our products have been tested and approved by a majority of authorities and test bodies around the world. This allows our solutions to play a critical role for safety in a wide variety of applications.

- Certified for Fire protection, UL 1479 2 and 3 hr firestop
- Certified material
- Blastload protection
- ATEX/Ex
- EMC

# Build today, upgrade tomorrow



## **From new-builds to existing constructions**

It is easy to put Roxtec's solutions into the early design specifications of a project. It is just as easy to add our products and solutions into an already existing construction. Either way, Roxtec guarantees a reliable sealing solution from day one and onwards.

## **Built-in spare capacity**

Whenever more cables or pipes need to be installed in the future, our unique sealing technology is ready. Multidiameter™, based on modules with removable layers, allows any previously unused seal in a frame to be adapted to fit the new cables or pipes. The amount of spare capacity can be decided from the start, allowing additional cables and pipes later at no further cost.

## **Cost-effective maintenance**

The unique benefit of the Roxtec technology is its incredible readiness for future changes. Made from high quality components it can be closed and opened repeatedly. This means cost-effective projects and many years of savings on maintenance.

# When you need simplicity



## **Clean installations**

Rextec is a prefabricated solution allowing clean and simple installations. This means there are no chemicals or mortars to mix. The installations can be finished quickly and without creating a mess on site.

## **Neatly organized**

Thanks to the design and the modular build of a Rextec seal, cables and pipes become neatly

organized as they pass through the frame. A small but proper distance between each cable or pipe creates high area efficiency. It also allows for a good overview and easy inspections.

## **Fewer errors**

By reducing the possibilities of human mistakes during installation cables and pipes can be sealed with high reliability. The architecture of



a Rextec transit clearly indicates where cables and pipes go, and how tightly together they can fit. This reduces the risk of over-crowding the openings. It also eliminates the risk for unwanted gaps between cables.

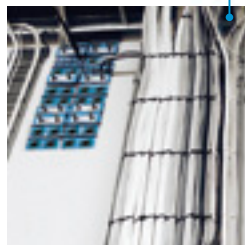
# Roxtec in buildings and construction projects

The Roxtec sealing system is found in many environments and applications within the Construction industry. Shown here are examples of installations where our customers benefit from the flexibility and efficiency of our solutions.

**Wastewater plant:** sealing of cables through a wall in the foundation.



**Office building:** signal and power cables sealed in basement culverts.



**Bridge/Tunnel:** protected cables in the maintenance culverts below the Toll and Pay stations.



**Bridge/Tunnel:** sealing of power and signal cables in cabinets of trackside equipment in the pylons.



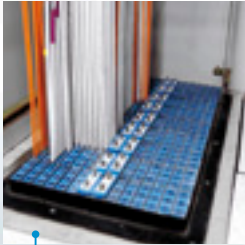
**Bridge/Tunnel:** sealing of cables in core-drilled holes inside technical rooms.



**Cleanrooms:** installation in the sub-fab area of a manufacturing industry.



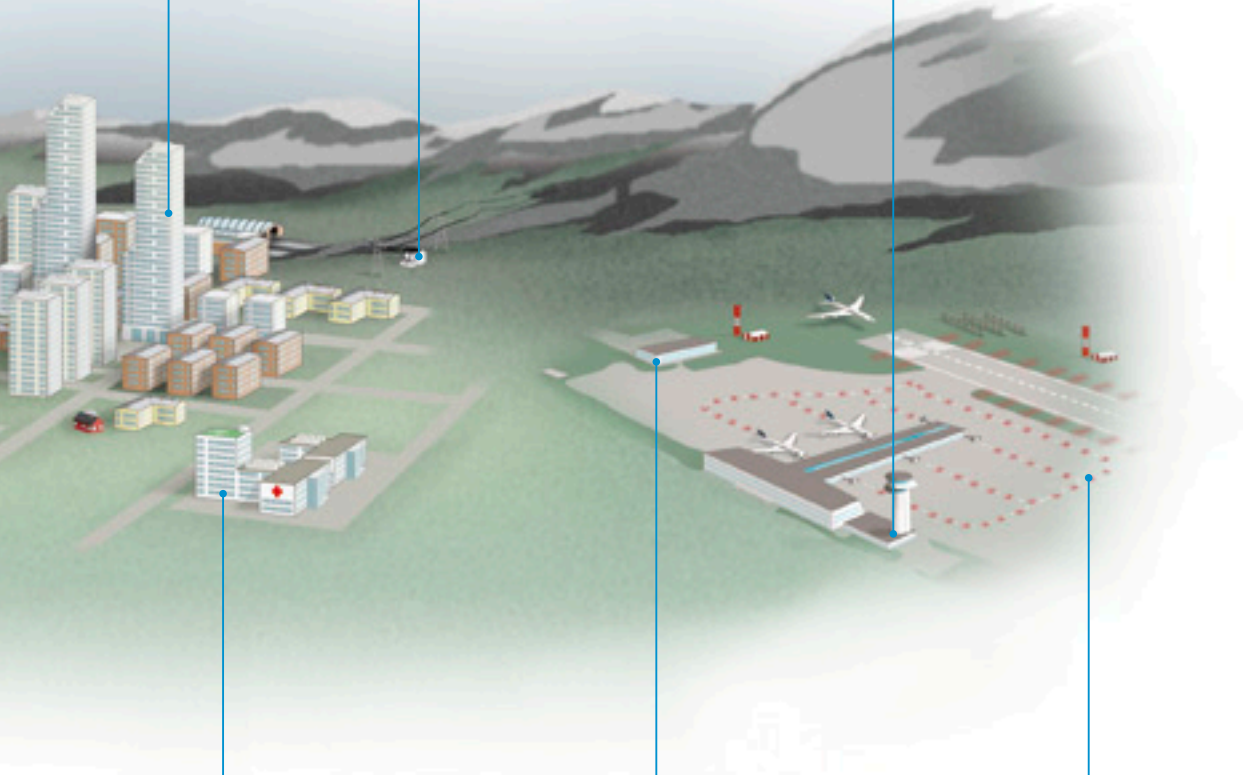
**Highrise building:** fire-sectioning and sealing of data cables passing through each floor.



**Power substation:** sealing of power cables passing through the outer wall.



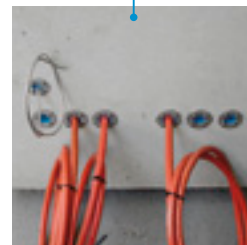
**Airport:** power cables sealed in walls and floors in the culverts below the tower.



**Hospital:** sealed and secured power cable in the basement.

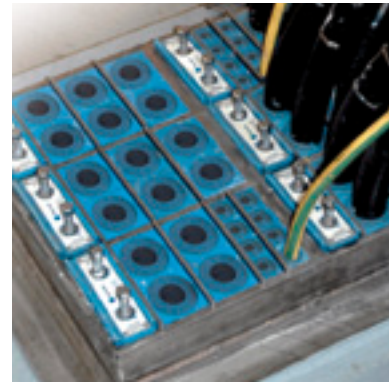
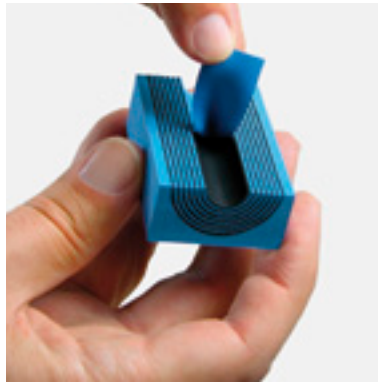


**Airport:** sealing of cables through wall in Air traffic control centre (ATCC).



**Airport:** power cables to runway lights sealed in the wall of concrete boxes in the ground.

# A truly flexible sealing system



## Multidiameter™

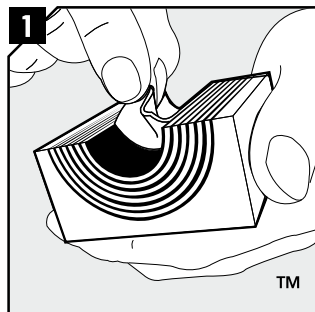
The smart adaptability of the Rextec technology makes installation of cables and pipes easy and safe. Each Rextec seal has removable layers that enable a perfect fit to different sizes of cable or pipe. Just peel off a few layers and the seal fits the desired size of a cable or pipe.

## Raising the bar

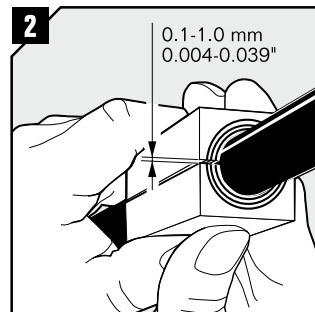
Our sealing system has established itself as a reliable and well-engineered industrial standard among our customers. By combining safety with cost-effectiveness we help raise the bar for a large number of customers around the world operating in a wide range of industries.

## Basic steps

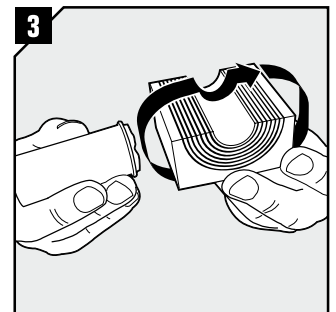
in the assembly of a modular-based Rextec sealing solution



1 Adapt modules, which are to hold cables or pipes, by peeling off layers until you reach the gap seen in pic. 2. The halves may not differ by more than one layer.



2 Achieve a 0.1-1.0 mm gap between the two halves when held against the cable/pipe.



3 Lubricate all modules for the frame thoroughly, both the inside and the outside surfaces.

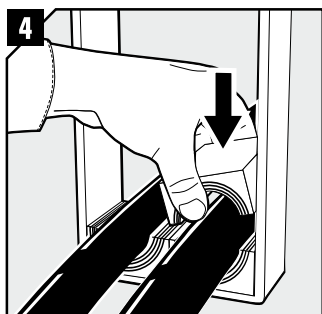




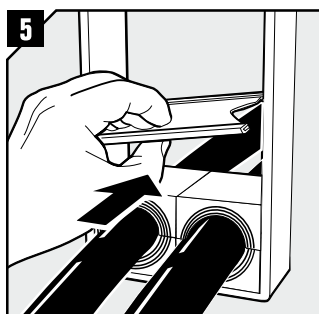
### Easy installation

Our products are easy to install. Few parts are needed to make an installation and the work can be finished quickly. The wide product range means there are solutions for every type of application. Frames can be installed in a variety of materials, ranging from concrete and brick to steel.

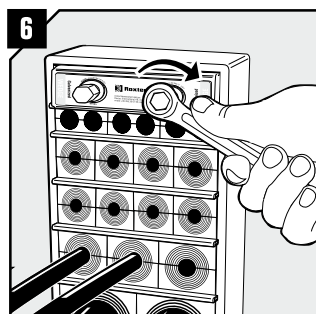
The frames can be cast or welded into the construction, or inserted in core-drilled holes. They can also be bolted onto the surface. By choosing Rextec you get a complete technical solution.



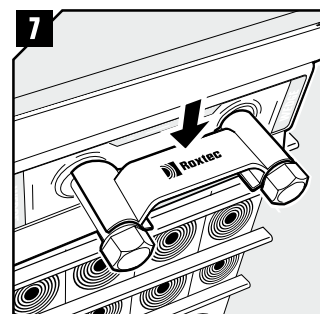
Insert the modules according to your installation plan (transit plan). It is recommended to seal cables/pipes at the bottom of the frame and put spare modules on top.



Insert a stayplate on top of every finished row of modules.



Insert the Rextec Wedge and tighten the screws until full stop.



Attach the Wedge Clip to the wedge bolts to check that the wedge is properly tightened.

# Engineering support and services



## Local expertise

Roxtec is much more than a supplier. Our sales and support staff around the world play an active role in helping customers finding their optimum solution. Our gathered knowledge from many years of work in the field, means we can guide you right to find solutions that suit your needs and applications.

## Design software

In projects where larger numbers of cables and pipes are to be sealed, our design aid software, the Roxtec Transit Manager, can be useful. Your cable lists and configurations can be imported, to automatically generate packing plans according to your needs. The software also produces drawings and material lists for the purchasers and installers.

## CAD library

The Roxtec CAD Library is a utility software to simplify and improve design work regarding routing and



sealing of cables and pipes. The CAD Library contains ready made geometrics of Roxtec products which are ready to be opened and used in CAD-compatible environments.

## Product installation training

Whenever desired we also provide product installation training through our sales staff and technicians. We are there to support and train you on site. Call us for more information.

## Website for installers

In the Installer's Section of our global web site we have collected the type of information that we know is useful to those who actually do the assembly and installation work. Instructions and videos can be viewed online or downloaded for free.

# Product availability worldwide

The Roxtec solutions are available worldwide through our network of local suppliers. This means fast deliveries from local stocks in more than 70 markets. It also means direct support by local staff on site.



## **Customers and projects:**

Areva, AstraZeneca, Aventis, Bank Stuttgart, BASF, Big Dig Boston, Cavanna S.p.A., Clinical Center Jena, CNOOC, ConocoPhillips, COVRA, Dow Chemical, Enercon, EWR, Gas District Woikoski, GlaxoSmithKline (GSK), INEOS Chemical, Main Station Berlin, Max-Planck-Institut, Merck, New York Times, Ontario Power Gen, Pfizer, Printing House Sanomala, Royal Alex Hospital, SECCO, SEI, St John's Waste Water Treatment Plant, ST Microelectronics, Winnipeg Int Airport.





## Local presence worldwide

Roxtec is the world-leading provider of flexible sealing solutions for cable and pipe penetrations. Our adaptability solution, Multidiameter™, is based on modules with removable layers. It seals perfectly, regardless of the dimension of the cable or pipe. We are present all over the world in order to ensure product availability as well as quick support and supply.

**Sweden**, Roxtec International AB, HQ  
**Argentina**, INGIAR Representaciones SRL  
**Australia**, Roxtec Australia Ltd  
**Belgium**, Roxtec b.v.b.a/s.p.r.l  
**Brazil**, Roxtec Latin América Ltda  
**Chile**, FACOR Ltda  
**China**, Roxtec International Trading (Shanghai) Co. Ltd  
**Croatia**, Roxtec d.o.o.  
**Czech Republic**, Roxtec CZ s.r.o  
**Denmark**, Roxtec ApS  
**Finland**, Roxtec Finland Oy  
**France**, Roxtec France  
**Germany**, Roxtec GmbH  
**Hungary**, Glob-Prot Trade and Service Ltd  
**India**, Roxtec India Pvt Ltd  
**Italy**, Roxtec Italia S.r.l  
**Japan**, Roxtec Japan K.K  
**Kazakhstan**, Company ECOS  
**Lithuania**, SWELBALT  
**Mexico**, Roxtec de México, S.A. de C.V  
**Nigeria**, Structured Resource Business Ltd  
**The Netherlands**, Roxtec BV  
**Norway**, Roxtec AS  
**Peru**, Synixtor S.A.C  
**Poland**, Pionet Sp.zo.o  
**Portugal**, Glacis, LDA  
**Russia**, Roxtec RU  
**Romania**, Roxtec RO s.r.l.  
**Singapore**, Roxtec Singapore PTE Ltd  
**South Africa**, Roxtec Africa (PTY) Ltd  
**South Korea**, Roxtec Korea  
**Spain**, Roxtec Sistemas Pasamuros S.L  
**Switzerland**, Agro AG  
**UAE**, Roxtec Middle East F.Z.E  
**UK/Ireland**, Roxtec Ltd  
**USA/Canada**, Roxtec Inc

For other markets and detailed contact information, please visit [www.roxtec.com](http://www.roxtec.com)



Roxtec International AB  
 Box 540, 371 23 Karlskrona, SWEDEN  
 PHONE +46 455 36 67 00, FAX +46 455 820 12  
 EMAIL [info@roxtec.com](mailto:info@roxtec.com), [www.roxtec.com](http://www.roxtec.com)